

**Anti-VPS26 VPS26A Monoclonal Antibody**  
**Catalog # ABO14642****Specification****Anti-VPS26 VPS26A Monoclonal Antibody - Product Information**

Application	WB, IF, ICC, IP
Primary Accession	<a href="#">O75436</a>
Host	Rabbit
Isotype	Rabbit IgG
Reactivity	Rat, Human, Mouse
Clonality	Monoclonal
Format	Liquid

**Description**

Anti-VPS26 VPS26A Monoclonal Antibody . Tested in WB, ICC/IF, IP applications. This antibody reacts with Human, Mouse, Rat.

**Anti-VPS26 VPS26A Monoclonal Antibody - Additional Information**

**Gene ID** 9559

**Other Names**

Vacuolar protein sorting-associated protein 26A, Vesicle protein sorting 26A, hVPS26, VPS26A {ECO:0000303|PubMed:30213940, ECO:0000312|HGNC:HGNC:12711}

**Application Details**

WB 1:500-1:2000<br>ICC/IF 1:50-1:200<br>IP 1:50

**Contents**

Rabbit IgG in phosphate buffered saline, pH 7.4, 150mM NaCl, 0.02% sodium azide and 50% glycerol, 0.4-0.5mg/ml BSA.

**Immunogen**

A synthesized peptide derived from human VPS26

**Purification**

Affinity-chromatography

**Storage**

**Store at -20°C for one year. For short term storage and frequent use, store at 4°C for up to one month. Avoid repeated freeze-thaw cycles.**

**Anti-VPS26 VPS26A Monoclonal Antibody - Protein Information**

**Name** VPS26A {ECO:0000303|PubMed:30213940, ECO:0000312|HGNC:HGNC:12711}

**Function**

Acts as a component of the retromer cargo-selective complex (CSC). The CSC is believed to be the

core functional component of retromer or respective retromer complex variants acting to prevent missorting of selected transmembrane cargo proteins into the lysosomal degradation pathway. The recruitment of the CSC to the endosomal membrane involves RAB7A and SNX3. The SNX-BAR retromer mediates retrograde transport of cargo proteins from endosomes to the trans- Golgi network (TGN) and is involved in endosome-to-plasma membrane transport for cargo protein recycling. The SNX3-retromer mediates the retrograde endosome-to-TGN transport of WLS distinct from the SNX-BAR retromer pathway. The SNX27-retromer is believed to be involved in endosome-to-plasma membrane trafficking and recycling of a broad spectrum of cargo proteins (Probable). The CSC seems to act as recruitment hub for other proteins, such as the WASH complex and TBC1D5 (Probable). Required for retrograde transport of lysosomal enzyme receptor IGF2R (PubMed:<a href="http://www.uniprot.org/citations/15078902" target="\_blank">15078902</a>, PubMed:<a href="http://www.uniprot.org/citations/15078903" target="\_blank">15078903</a>). Required to regulate transcytosis of the polymeric immunoglobulin receptor (plgR-plgA) (PubMed:<a href="http://www.uniprot.org/citations/15247922" target="\_blank">15247922</a>). Required for the endosomal localization of WASHC2A (indicative for the WASH complex) (PubMed:<a href="http://www.uniprot.org/citations/22070227" target="\_blank">22070227</a>). Required for the endosomal localization of TBC1D5 (PubMed:<a href="http://www.uniprot.org/citations/20923837" target="\_blank">20923837</a>). Mediates retromer cargo recognition of SORL1 and is involved in trafficking of SORL1 implicated in sorting and processing of APP (PubMed:<a href="http://www.uniprot.org/citations/22279231" target="\_blank">22279231</a>). Involved in retromer-independent lysosomal sorting of F2R (PubMed:<a href="http://www.uniprot.org/citations/16407403" target="\_blank">16407403</a>). Involved in recycling of ADRB2 (PubMed:<a href="http://www.uniprot.org/citations/21602791" target="\_blank">21602791</a>). Enhances the affinity of SNX27 for PDZ-binding motifs in cargo proteins (By similarity).

#### Cellular Location

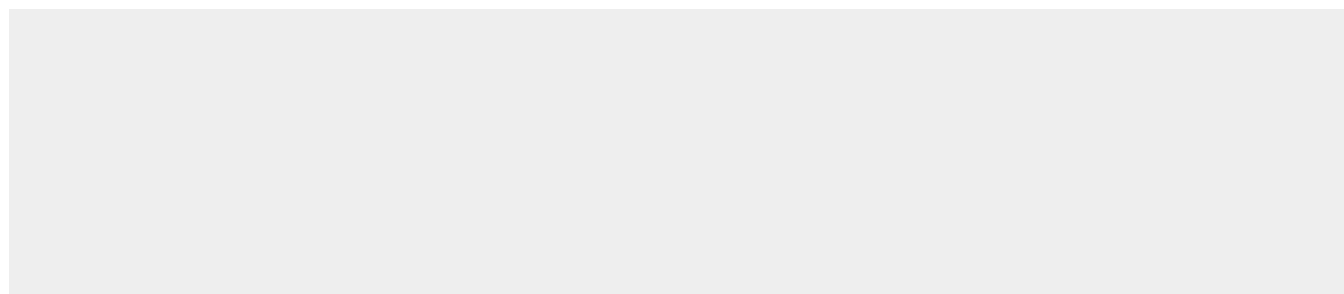
Cytoplasm. Endosome membrane; Peripheral membrane protein {ECO:0000250|UniProtKB:P40336}. Early endosome Note=Localizes to tubular profiles adjacent to endosomes (PubMed:15078903). Predominantly found in early not late endosomes (By similarity). {ECO:0000250|UniProtKB:P40336}

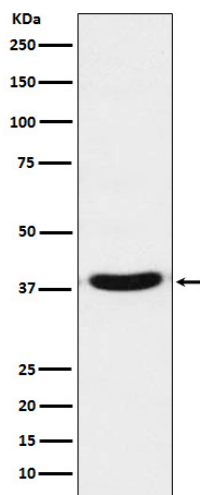
#### Anti-VPS26 VPS26A Monoclonal Antibody - Protocols

Provided below are standard protocols that you may find useful for product applications.

- [Western Blot](#)
- [Blocking Peptides](#)
- [Dot Blot](#)
- [Immunohistochemistry](#)
- [Immunofluorescence](#)
- [Immunoprecipitation](#)
- [Flow Cytometry](#)
- [Cell Culture](#)

#### Anti-VPS26 VPS26A Monoclonal Antibody - Images





Western blot analysis of VPS26 expression in A431 cell lysate.